

Facilities Plan FY2016-2017

Wayne Preparatory Academy
600 Tommy's Road
Goldsboro, NC 27530

Report Date: June 16, 2016

Presented by:



Dr. Forgette & Mr. Preskitt



Wayne Preparatory Academy
Creating a Legacy of Leadership and Learning

600 Tommy's Road
Goldsboro, NC 27530

Info@wpanc.org
919-734-8085

Table of Contents

[Wayne Preparatory Academy Purpose, Vision, and Mission](#)

[Purpose Statement](#)

[Vision Statement](#)

[Mission Statement](#)

[Facilities Plan FY2016-17](#)

[Framework](#)

[Facilities Plan Introduction](#)

[Facilities Plan Summary](#)

[Overview](#)

[Kindergarten Facility](#)

[Considerations:](#)

[Learning Cottage A](#)

[Learning Cottage A Notes:](#)

[Considerations:](#)

[Learning Cottage B](#)

[Learning Cottage B Notes:](#)

[Considerations:](#)

[Learning Cottage C](#)

[Learning Cottage C Notes:](#)

[Considerations:](#)

[Soccer Field & Sports Area](#)

[Sports Area Notes:](#)



Wayne Preparatory Academy
Creating a Legacy of Leadership and Learning

600 Tommy's Road
Goldsboro, NC 27530

Info@wpanc.org
919-734-8085

Wayne Preparatory Academy Purpose, Vision, and Mission

Purpose Statement

The purpose of Wayne Preparatory Academy is to provide an alternative choice in public education to the parents and students surrounding Wayne County, NC. Specifically, “Wayne Preparatory Academy is driven to achieve a vibrant learning community that goes beyond event and test driven learning” (WPA Charter, 2014. p.3). Our Charter indicates that while there is an academic focus in Wayne County Schools, none of the schools are based on dedicated, proven research that all students have gifts and talents that can be systematically developed into strengths-based leadership.

Vision Statement

While the vision of Wayne Preparatory Academy is not fully developed in our Charter, the Leadership Team subscribes to the following desired end state:

The vision of Wayne Preparatory Academy is that every child achieve academic excellence, unlock their leadership potential, and become an inspiration to others.

From our School Improvement Plan:

We believe that all children will learn if we teach them carefully. Careful instruction includes at its core teaching children at their instructional level and teaching children to mastery. We believe that learning is a function of instruction, not a function of the learner. We are committed to a culture of leadership that includes cooperative discipline, positive behavior supports, and an environment of earned consequences. We are designed to use data to drive our decisions in finance, operation, and academics. We are driven to focus on the needs of our scholars, rather than that of the whims of adults.

Mission Statement

The mission of Wayne Preparatory Academy is to create a legacy of leadership and learning that embraces, enriches, and engages children's strengths, one child at a time.

Leadership Starts Here!



Wayne Preparatory Academy
Creating a Legacy of Leadership and Learning

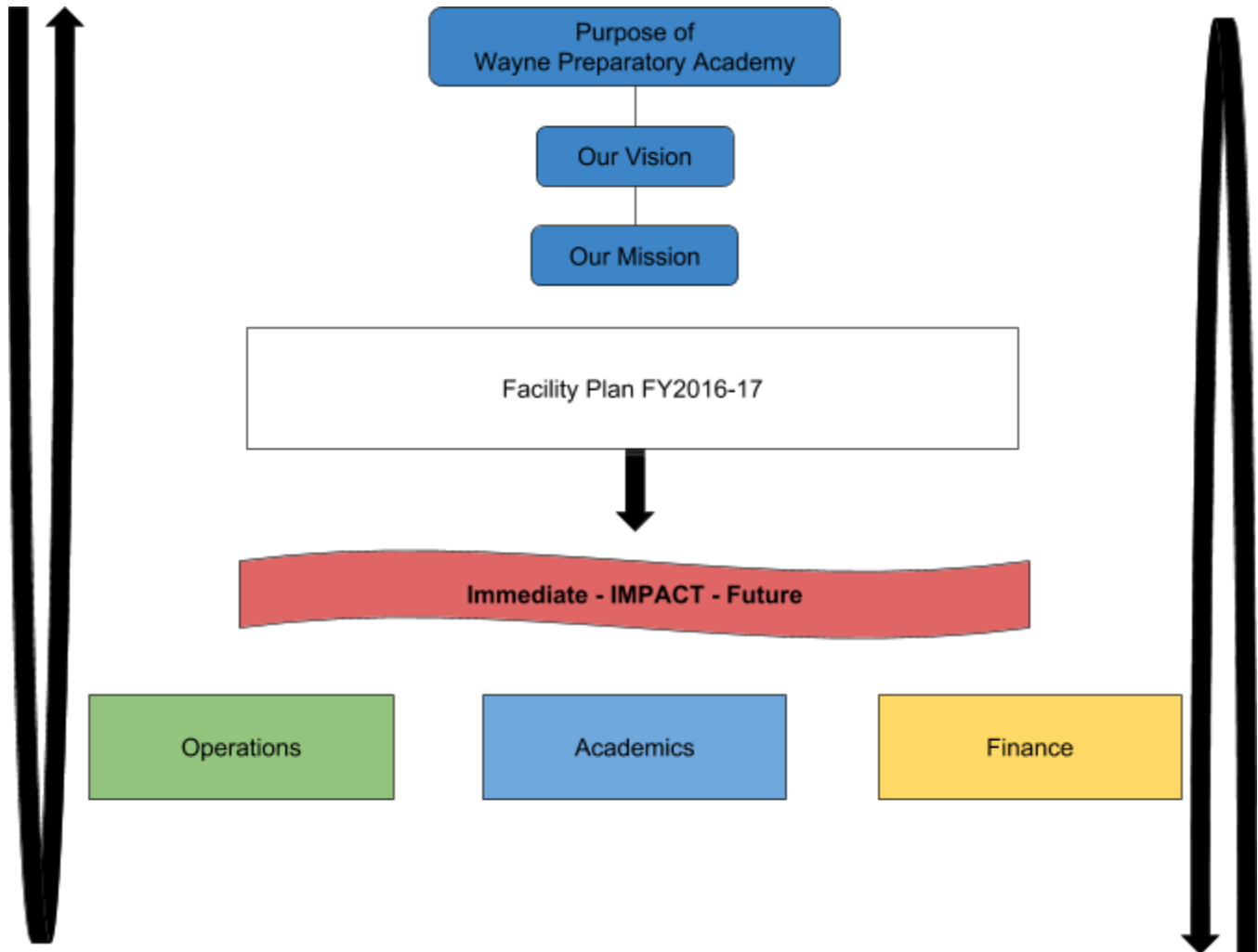
600 Tommy's Road
Goldsboro, NC 27530

Info@wpanc.org
919-734-8085

Facilities Plan FY2016-17

Framework

To address the feasibility of plans the Leadership Team subscribed to the following framework:



Leadership Starts Here!



Wayne Preparatory Academy
Creating a Legacy of Leadership and Learning

600 Tommy's Road
 Goldsboro, NC 27530

Info@wpanc.org
 919-734-8085

Facilities Plan Introduction

Total Grade Levels	K-6th Grade
Total Scholars	690
Total Special Education Scholars	55
Total Staff	64

Classroom Planning	Total Classrooms
General education classrooms	28
Special education self contained	1
Special education pull out	3 ½
Special education - Dedicated EC Services	2 ½
Library/Media center	0
Art & Design - elective	0 (shared EC pull out)
Music - elective	0 (shared EC pull out)
Foreign Language & Leadership - elective	0 (shared EC SC)
Blended-learning computer lab	0 (shared EC SC)
Physical education - office & storage	0 (shared EC pull out)
TOTAL	35

Front Office Team	Total Offices
Managing Director - (Superintendent)	1
Director of Finance	1
Director of Operations	1

Leadership Starts Here!



Wayne Preparatory Academy
Creating a Legacy of Leadership and Learning

600 Tommy's Road
 Goldsboro, NC 27530

Info@wpanc.org
 919-734-8085

Front Office Team (continued)	Total Offices (continued)
Director of Human Resources	(shared)
Dean of Academics - (Principal)	1
Dean of Students - (Assistant Principal)	1 (shared)
Dean of Federal Programs	1
Exceptional Children Elementary Coordinator	(shared)
Student Information Systems	1
Receptionist - Elementary & Middle School	1 (shared)
TOTAL	8

Facilities Plan Summary

The facility plan encompasses the full use of existing structures on Wayne Preparatory Academy's campus with minimal disruption to the existing layout. This provides the greatest opportunity to maximize space for classroom instruction while adhering to our vision, mission, and charter goals. The core elements of the plan include the reassignment of the existing preschool building to a Kindergarten Facility and the reorganization of classroom assignments across Learning Cottages A-C to accommodate 1st - 6th grade instruction and the administrative team.

Specific information pertaining to the core elements are provided below.



Wayne Preparatory Academy
Creating a Legacy of Leadership and Learning

600 Tommy's Road
 Goldsboro, NC 27530

Info@wpanc.org
 919-734-8085

Overview



Leadership Starts Here!



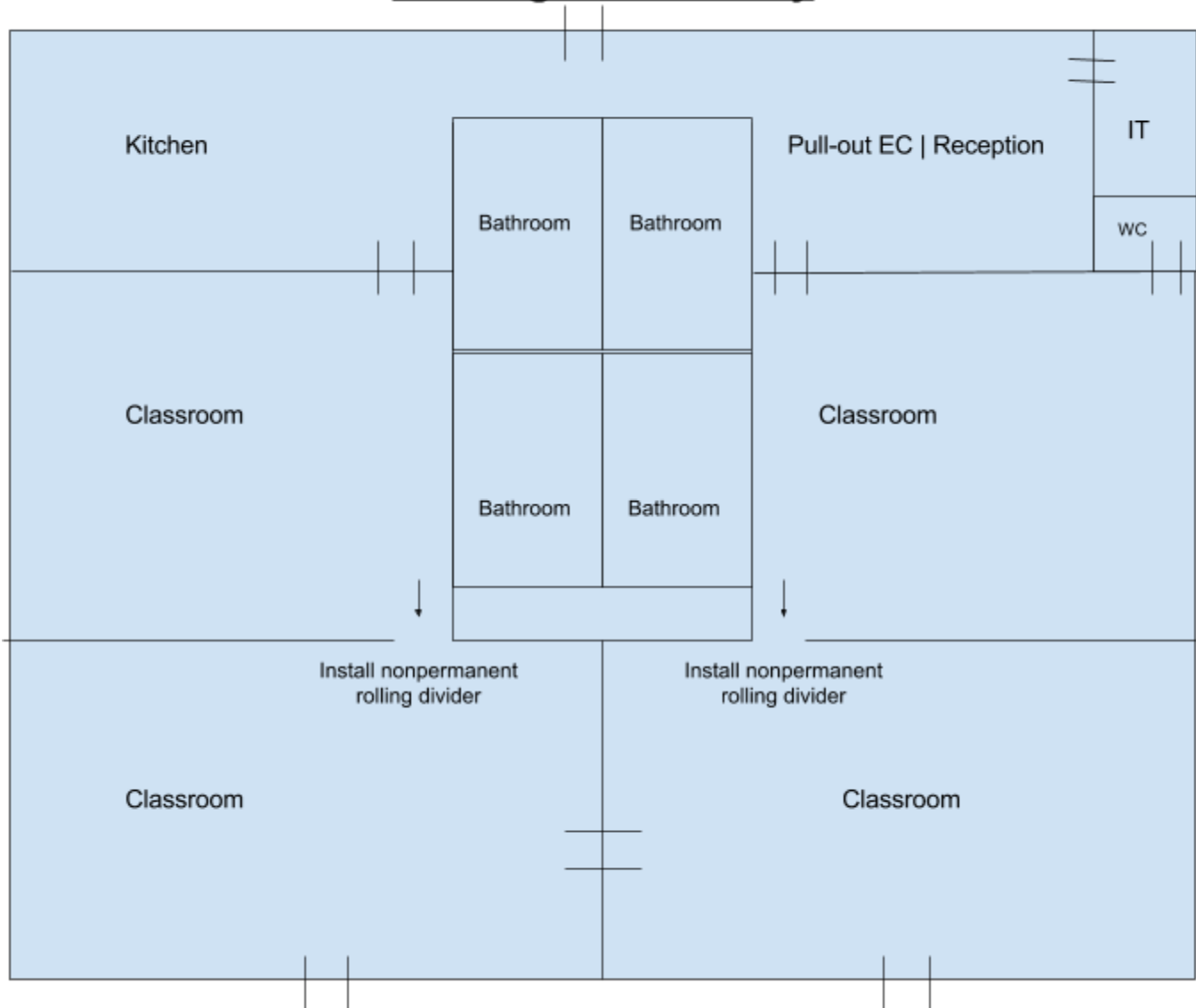
Wayne Preparatory Academy
Creating a Legacy of Leadership and Learning

600 Tommy's Road
Goldsboro, NC 27530

Info@wpanc.org
919-734-8085

Kindergarten Facility

Kindergarten Facility



Leadership Starts Here!



Wayne Preparatory Academy
Creating a Legacy of Leadership and Learning

600 Tommy's Road
Goldsboro, NC 27530

Info@wpanc.org
919-734-8085

K Facility Notes:

- Kindergarten Facility will house 63 scholars, 4 teachers, 1 instructional assistant, 1 EC instructional assistant, and a floating admin or receptionist.
- Classroom furniture will be moved from the Learning Cottages to the K facility
- Open classrooms will be closed off using nonpermanent rolling dividers
 - Tackable, portable, sound absorbing
- Kitchen counter opening will be closed off using the same non-permanent accordion dividers

Considerations:

- The team considered adding permanent doors to address the open classrooms but chose to go with a non-permanent solution to preserve the integrity of the original design.
- The team considered investigating movement of the kitchen wall and kitchen opening to increase class size by 3 scholars but chose not to follow through due to cost analysis.
 - Structural engineer cost to determine if the existing wall was load bearing
 - Deconstruction/detachment of existing wall
 - Existing electrical and plumbing deconstruction/detachment
 - Reconstruction of existing wall
 - Reconstruction of electrical and plumbing



Wayne Preparatory Academy
Creating a Legacy of Leadership and Learning

600 Tommy's Road
 Goldsboro, NC 27530

Info@wpnc.org
 919-734-8085

Learning Cottage A

EC Coordinator Elementary Dean of Federal Programs Dean of Students Dean of Students	Pull Out	6th Grade	6th Grade	Bathrooms	5th Grade	5th Grade
RTS	Pull Out	6th Grade	6th Grade	Bathrooms	5th Grade	5th Grade
RTS	PE					

Learning Cottage A

Learning Cottage A Notes:

- Learning Cottage A will host 5th grade, 6th grade, EC contracted services, EC Coordinator, Dean of Federal Programs, Dean of Students, Dean of Students, PE workstation, and two EC small group pull out classrooms.
- Office furniture for new staff will be supplied from existing front office furniture
 - 4 corner desks and desk chairs
- Pull out classroom tables will be repurposed from existing pull out furniture
- Open classrooms and office space will be closed off using nonpermanent dividers
 - Tackable, portable, sound absorbing

Leadership Starts Here!



Wayne Preparatory Academy
Creating a Legacy of Leadership and Learning

600 Tommy's Road
Goldsboro, NC 27530

Info@wpanc.org
919-734-8085

Considerations:

- The team considered installing permanent walls to close off the open classrooms and office space. However after additional review and advisory support from the Board the team chose to go with a non-permanent solution. This option will protect the integrity of the existing building, reduce conversion cost, and provide for alternate future use of the non-permanent dividers.

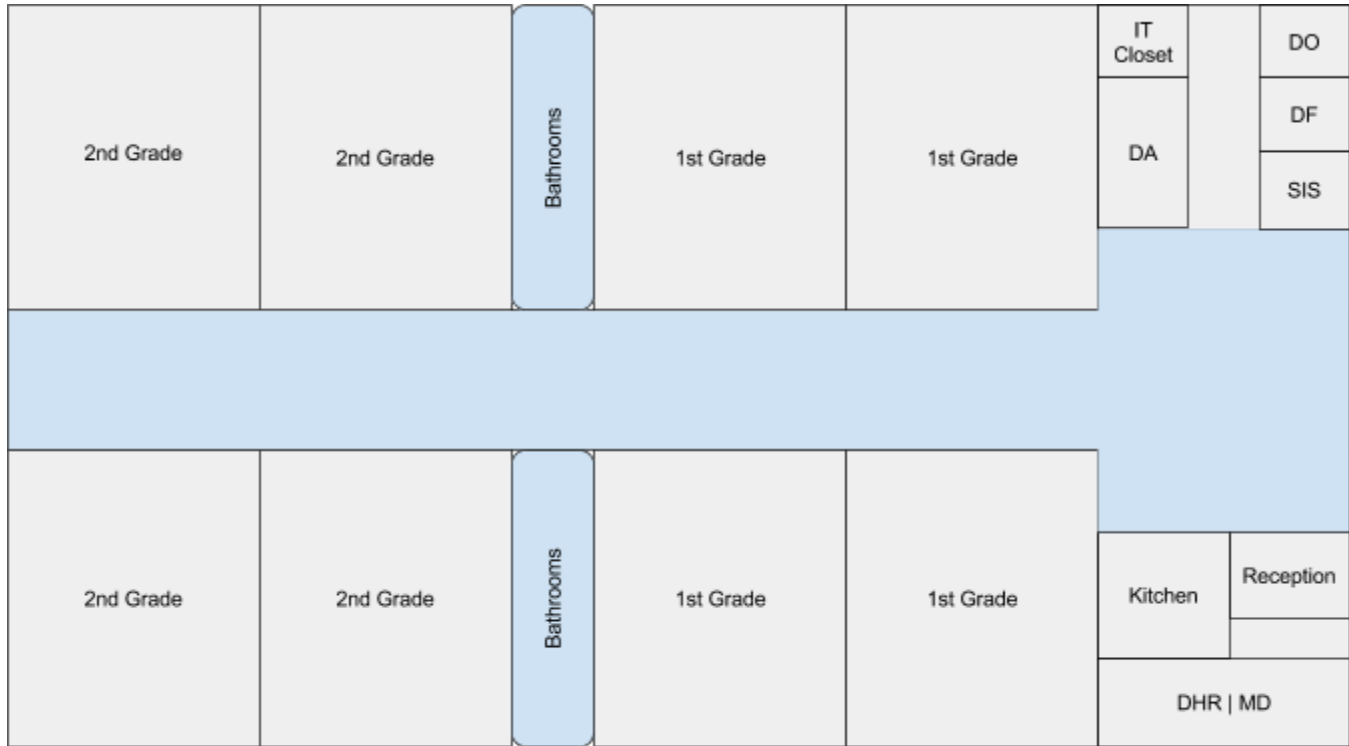


Wayne Preparatory Academy
Creating a Legacy of Leadership and Learning

600 Tommy's Road
 Goldsboro, NC 27530

Info@wpanc.org
 919-734-8085

Learning Cottage B



Learning Cottage B

Learning Cottage B Notes:

- Learning Cottage B will host 1st grade, 2nd grade, Director of Operations, Director of Finance, Attendance & SIS, Dean of Academics, 2 Receptionists, Director of HR, and the Managing Director.
- Office furniture will be purchased for offices

Considerations:

- The team considered using existing/original furniture for office distribution. However, due to the oversized nature of the furniture and the constraints of square footage of each office new size appropriate furniture will be purchased for the front office.

Leadership Starts Here!



Wayne Preparatory Academy
Creating a Legacy of Leadership and Learning

600 Tommy's Road
 Goldsboro, NC 27530

Info@wpanc.org
 919-734-8085

Learning Cottage C

Music	Art					
Pull Out		4th Grade	4th Grade	Bathrooms	3rd Grade	3rd Grade
EC SC		4th Grade	4th Grade	Bathrooms	3rd Grade	3rd Grade
Ldrship	Tech.					

Learning Cottage C

Learning Cottage C Notes:

- Learning Cottage C will host 3rd grade, 4th grade, EC self contained classroom, EC large group pull-out, Music workstation, Art workstation, Leadership workstation, Technology workstation.
- Pull out classroom tables will be repurposed from existing pull out furniture
- Workstation “office space” will be sectioned off using nonpermanent dividers
 - Tackable, portable, sound absorbing

Leadership Starts Here!



Wayne Preparatory Academy
Creating a Legacy of Leadership and Learning

600 Tommy's Road
Goldsboro, NC 27530

Info@wpanc.org
919-734-8085

Considerations:

- The team considered installing permanent walls to close off the additional work stations that would be converted into future storage for music and art. However after additional review and advisory support from the Board the team chose to go with a non-permanent solution. Similar to Cottage A, this option will protect the integrity of the existing building, reduce conversion cost, and provide for alternate future use of the non-permanent dividers.

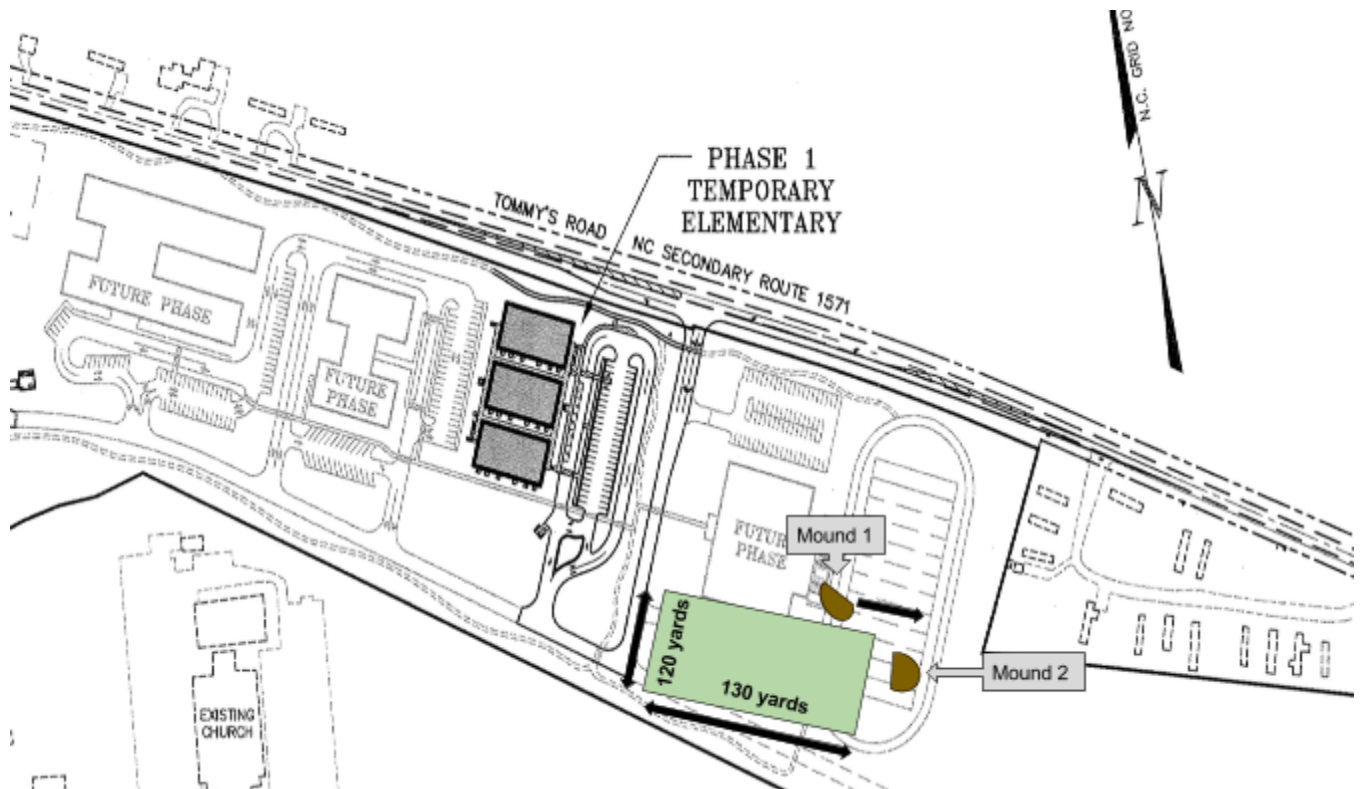


Wayne Preparatory Academy
Creating a Legacy of Leadership and Learning

600 Tommy's Road
Goldsboro, NC 27530

Info@wpanc.org
919-734-8085

Soccer Field & Sports Area



Sports Area Notes:

- Standard soccer field dimension: 120x80
- Field recommendations of 130x120 is to account for coaching and spectators (eventual bleachers)
- The Field runs parallel to the ditch approximately 8-10 feet off the ditch
- Mounds 1 & 2 of Dirt
 - Mound 1 needs to be pushed approximately 130 yards to the back of the field
 - Mound 2 is far enough away from the sports area that it will not pose a safety concern

Leadership Starts Here!